



Maine Floodplain Management Program

Department of Agriculture, Conservation and Forestry

How to make a FIRMette from the FEMA Map Service Center

In 2021 FEMA made changes to the Map Service Center.

A FIRMette is an official copy of a small section of a Flood Insurance Rate Map. It is suitable for making copies of the FIRM for distribution and flood zone determinations.

- 1 Go to the FEMA Map Service Center web site: <https://msc.fema.gov/portal>.
- 2 Enter an address and click on the search button.
- o A different view will be displayed based on the type of map published.
- o To change the location pin, click on the map in the correct location, the pin will move and center the map on the pin.
- o This view is for communities that have National Flood Hazard Layer digital data.

Enter an address, place, or coordinates:

Whether you are in a high risk zone or not, you may need flood insurance. In most cases, homeowners insurance doesn't cover flood damage. If you live in an area that is prone to flooding, you could find yourself ready to experience flood damage in your home over the next 30 years. For many, a National Flood Insurance Program's flood insurance policy could cost less than \$400 per year. Call your insurance agent today and protect what you've built.

Learn more about [steps you can take](#) to reduce the risk of flood damage.

Search Results—Products for **AUGUSTA, CITY OF**

The flood map for the selected area is number **23011C0517D**, effective on **06/16/2011**

DYNAMIC MAP

MAP IMAGE

Changes to this FIRM

- Revisions (0)
- Amendments (2)
- Revalidations (0)

You can choose a new flood map or move the location pin by selecting a different location on the locator map below or by entering a new location in the search field above. NOTE: Please be sure to enable popups for this site.

MAP PANELS

- Digital Data Available
- No Digital Data Available
- Unmapped
- Area of Minimal Flood Hazard
- SPECIAL FLOOD HAZARD AREAS
- FLOODWAY
- Area of Undetermined Flood Hazard

OTHER AREAS

- Without Base Flood Elevation (BFE)
- When BFE is Depth
- Regulatory Floodway
- 0.2% Annual Chance Flood Hazard
- 1% Annual Chance Flood Hazard
- 1% Annual Chance Flood Hazard with average depth less than one foot or with drainage ratios of 1:60 or less
- Future Conditions 1% Annual

OTHER FEATURES

- Cross Sections with 1% Annual Chance Water Surface Elevation
- Coastal Truncates
- Base Flood Elevation Line (BFE)
- Limit of Study
- Jurisdiction Boundary
- Coastal Truncate Baseline
- Profile Baseline
- Hydrographic Feature

- 3 Click on the Dynamic Map icon to view the FIRMette.

Search Results—Products for **AUGUSTA, CITY OF**

Show ALL Products »

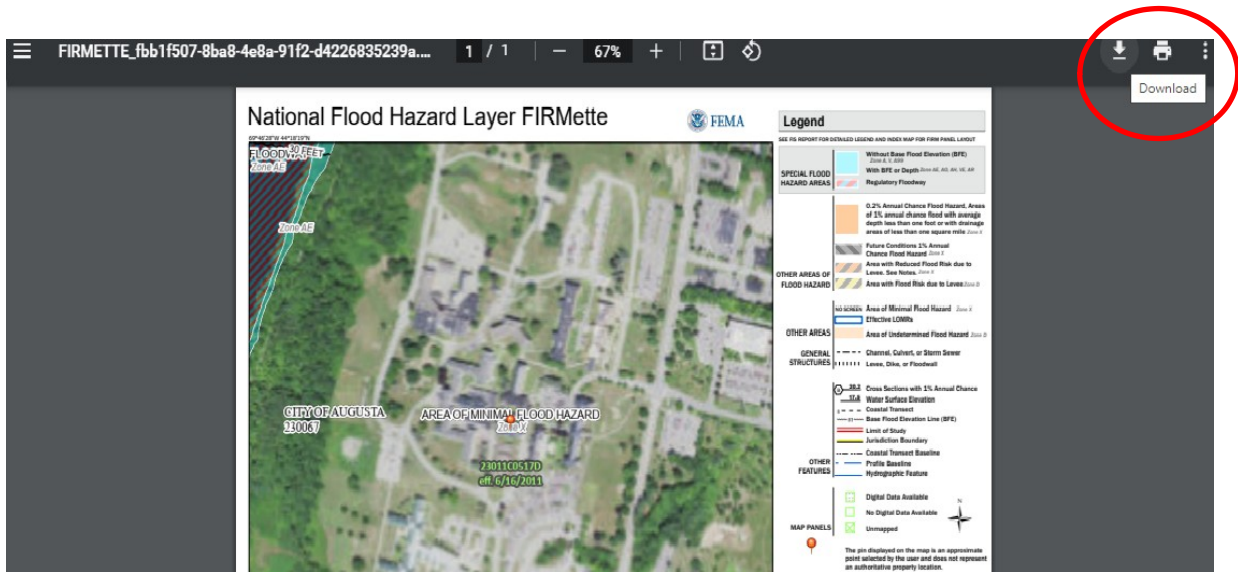
The flood map for the selected area is number **23011C0517D**, effective on **06/16/2011** ?



Changes to this FIRM ?

- Revisions (0)
- Amendments (2)
- Revalidations (0)

- 4 A new web window will open with the map which can be downloaded and saved as a PDF.
- o The FIRMette is formatted to fit on a standard sheet of paper.



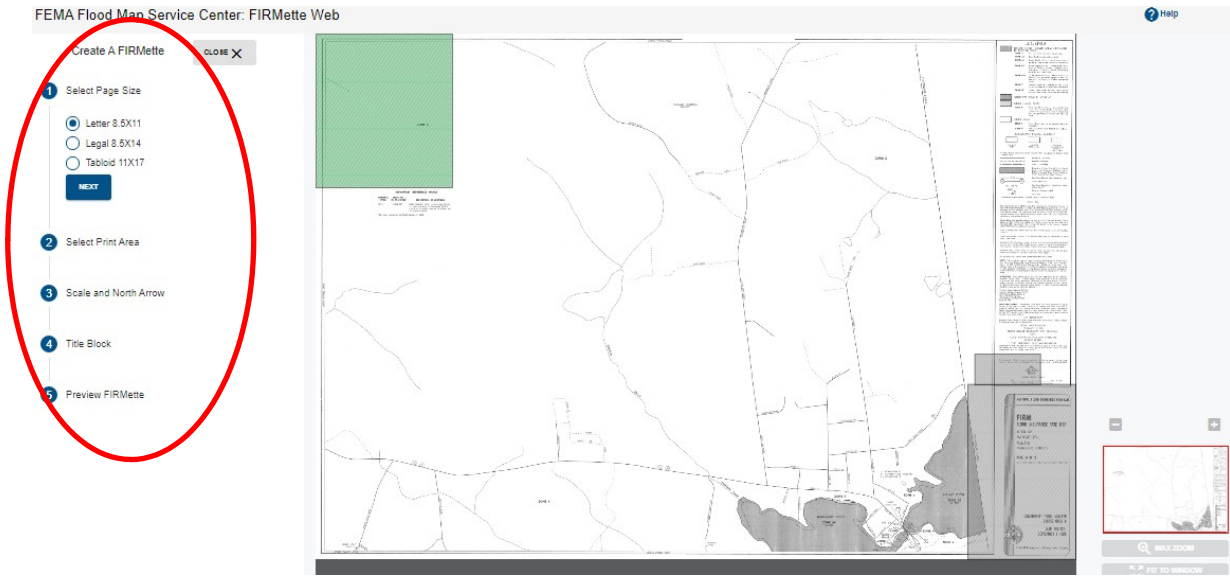
For communities with paper maps that are not digital:

- 1 Enter an address and click on the search button.
- 2 Click on the VIEW/PRINT FIRM icon.

FEMA Flood Map Service Center: Search By Address

- 3 A new window will open showing the map.
- 4 In the lower, right corner, use the “+” or “-” to zoom in or out; click and drag using the mouse to pan across the map.
- 5 Click on the button “Create a FIRMette”.

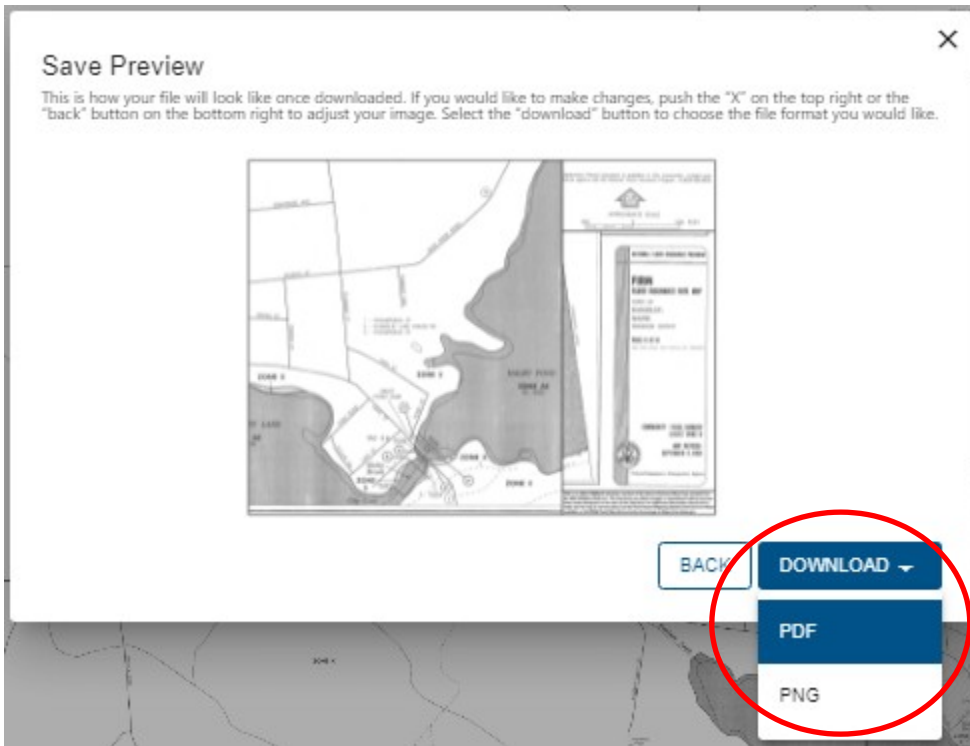
- 6 The Print Area is highlighted, using the mouse, move it to the appropriate location.
- 7 The print page size can be selected by clicking on the #1 Select Page Size button.
- 8 Click on the #3 Scale and North Arrow button and adjust as needed.
- 9 Click on the #4 Title Block button and adjust as needed.
- 10 Click on the #5 Preview FIRMette button to Create FIRMette.



- 11 Click on the Preview button.

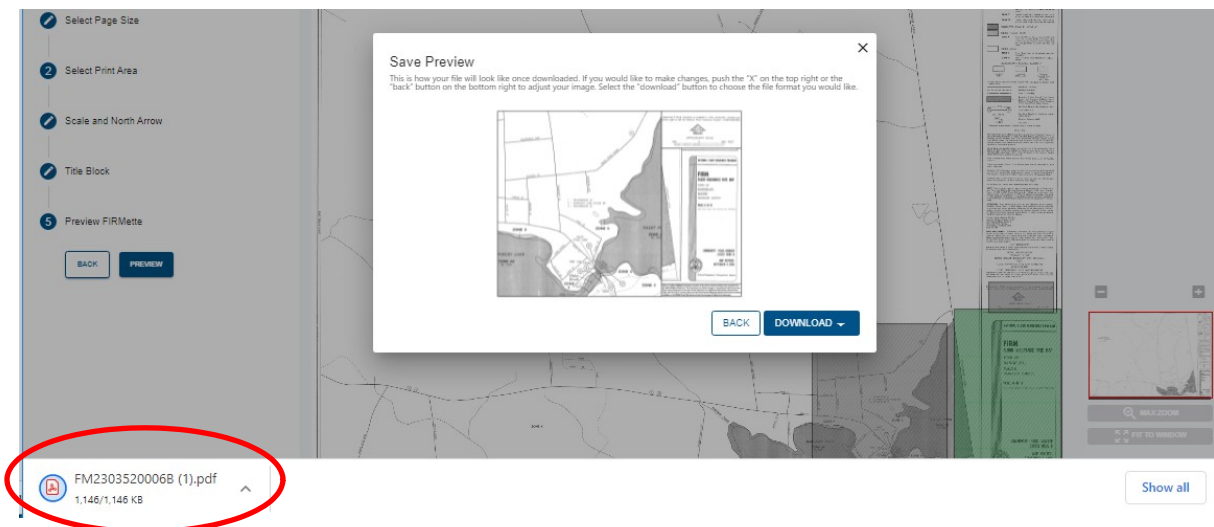


12 A pop up window will open showing the FIRMette. If it is correct, click the Download button to save it.



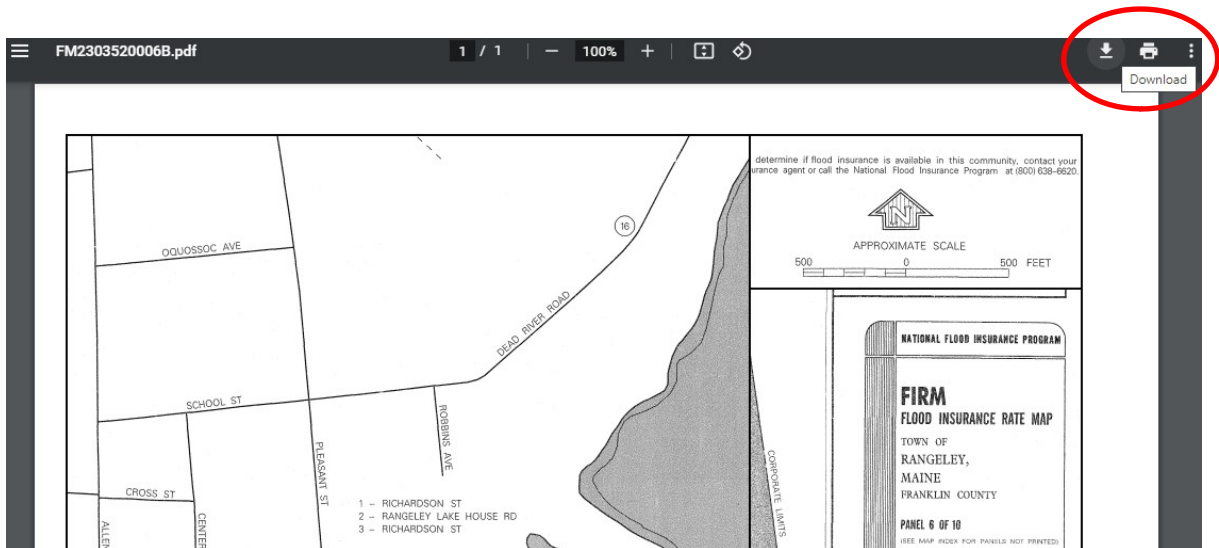
13 Select the format to save the map as a PDF or a PNG file.

14 When it has downloaded, open the file.



15 The FIRMette will open in a new browser window.

16 Click the Download button and navigate to a location to save the map.



Additional data is available from the Map Service Center.

- The map panel can be downloaded and saved.
- Changes to the maps can be viewed and saved.
- All available products can be viewed and saved.

Enter an address, place, or coordinates: [?](#)

rangeley, me

Whether you are in a high risk zone or not, you may need [flood insurance](#) because most homeowners insurance doesn't cover flood damage. If you live in an area with low or moderate flood risk, you are 5 times more likely to experience flood than a fire in your home over the next 30 years. For many, a National Flood Insurance Program's flood insurance policy could cost less than \$400 per year. Call your insurance agent today and protect what you've built.

Learn more about [steps you can take](#) to reduce flood risk damage.

Search Results—Products for RANGELEY, TOWN OF

[Show ALL Products »](#)

The flood map for the selected area is number **2303520006B**, effective on **09/08/1999** [?](#)

MAP IMAGE

[VIEW/FIRM](#) [DOWNLOAD FIRM PANEL](#)

Changes to this FIRM [?](#)

- Revisions (0)
- Amendments (5)

00-01-0474A-230352	04/12/2000	DL
00-01-1024A-230352	08/24/2000	DL
03-01-0054A-230352	11/13/2002	DL
16-01-1840A-230352	07/08/2016	DL
17-01-2279A-230352	08/29/2017	DL
- Revalidations (0)

- Click on the Show ALL Products button.
- Click on a folder name to see the contents.
- Click on DL icon to view or download the documents.

Search Results for RANGELEY, TOWN OF

Click [subscribe](#) to receive email notifications when products are updated. If you are a person with a disability, are blind, or have low vision, and need assistance, please contact a [map specialist](#).

Please Note: Searching All Products by county displays all products for all communities within the county. You can refine your search results by specifying your specific jurisdiction location using the drop-down menus above.

Product ID	Effective Date	Size	Download
230352V000	09/08/1999	5MB	

Effective Products (34)

- FIRM Panels (10)
- FIS Reports (1)
- LOMC (22)
- NFHL Data-State (1)
- NFHL Data-County (0)
- Preliminary Products (0)
- Pending Product (0)
- Historic Products (2)
- Flood Risk Products (0)

- Available data includes:
 - Each FIRM panel including the index
 - The Flood Insurance Study Report
 - Letters of Map Change – LOMR, LOMA, and Revalidations
 - The National Flood Hazard Layer by State or County, for GIS use, it only includes areas with digital data coverage
 - Preliminary Products, if there is new data due to become effective
 - Pending Products, if there is new data due to become effective
 - Historic Products, including FIRMs, FIS Report, and LOMCs
 - Flood Risk Products, if prepared for the selected community
 - If a folder is of gray type, there is no data available