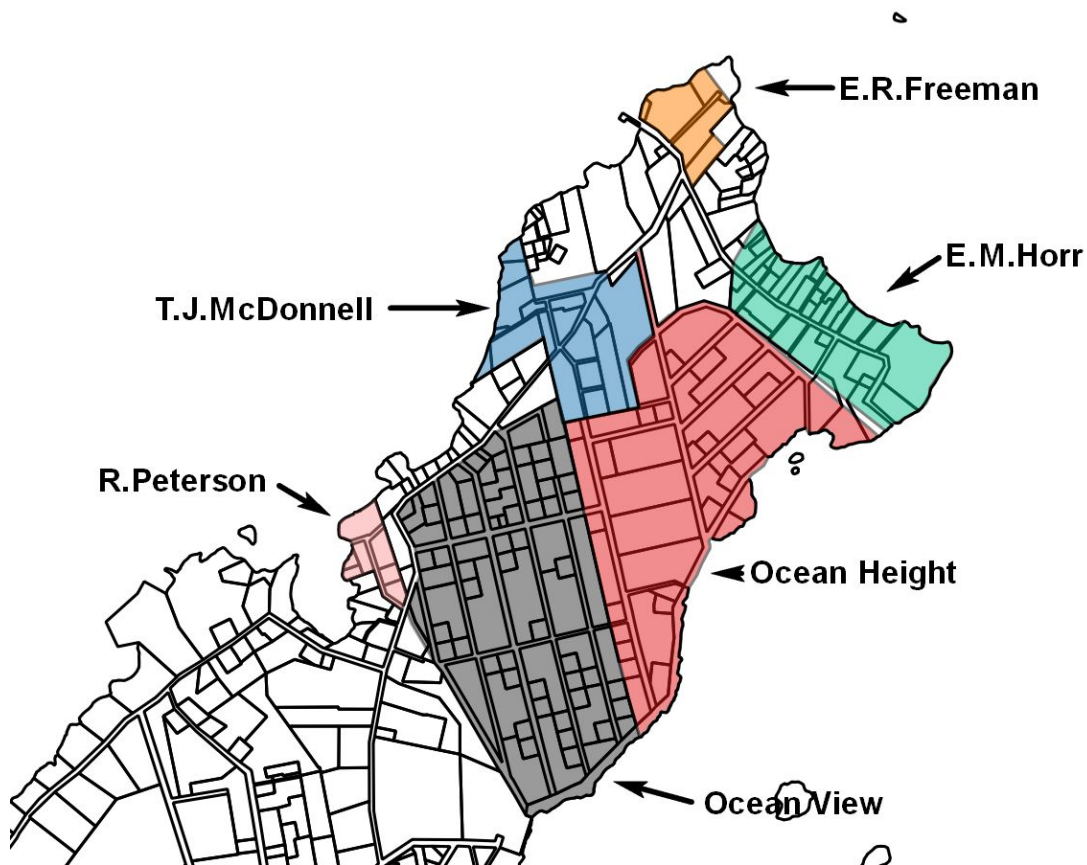


# Paper Street Project Report

## Section 6.1 Land of Ernest R Freeman

Cumberland County Registry of Deeds  
Plan Bk 139 Pg 6 Registered 8-26-1983

### A. Location of Subdivision on Island

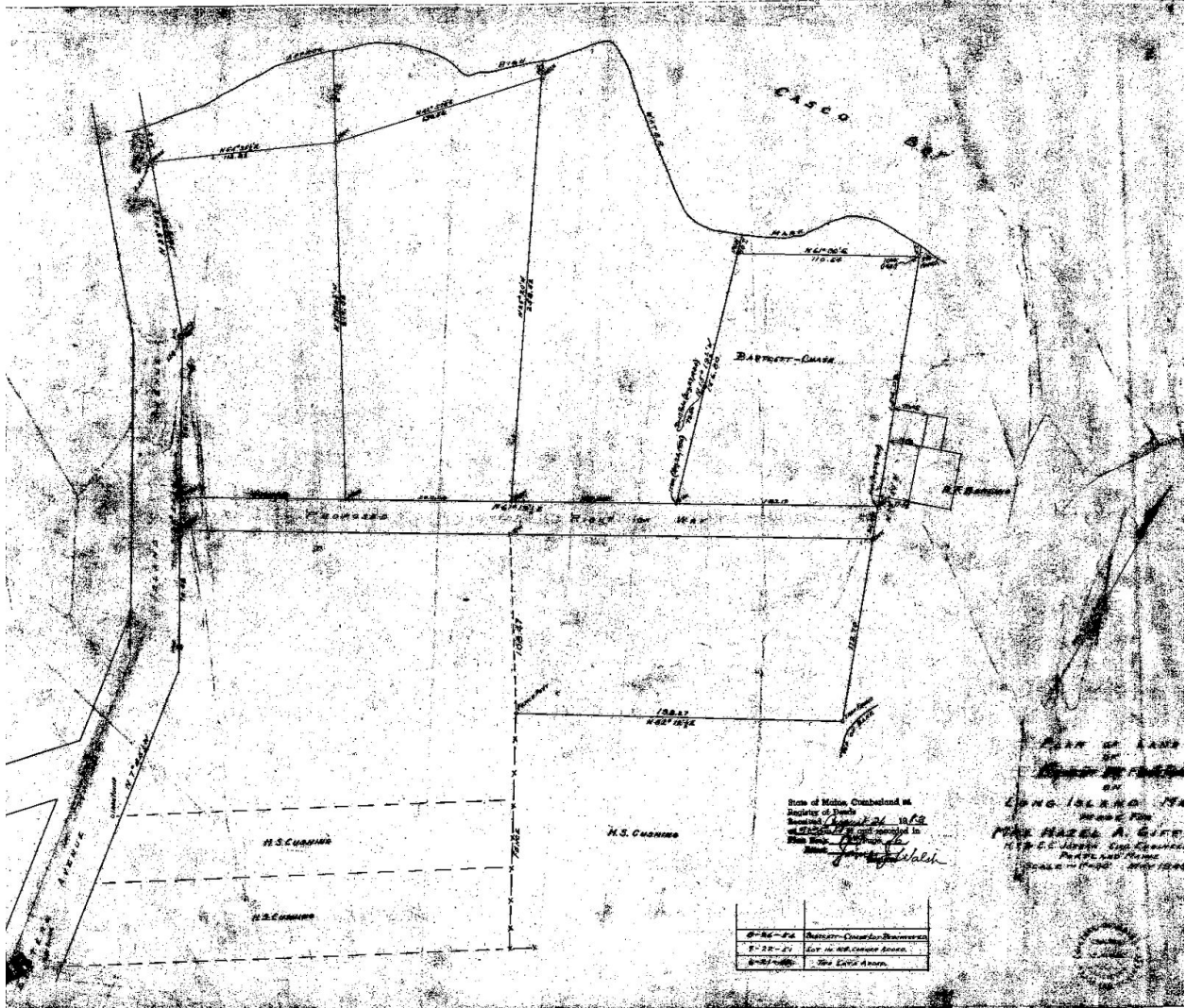


# Land of Ernest R Freeman

Cumberland County Registry of Deeds  
Plan Bk 139 Pg 16 Registered 8-26-1983

## B. Registered Subdivision Land Plan

PLAN BOOK NO.	PAGE NO.
139	16



**Note:** NTED refers to the 1997 Notice to Extend Deadline of Automatic Vacation of Paper Streets  
LIPM refers to the 2016-2017 Official Long Island Tax Parcel Map

